

What to know about the novel CORONAVIRUS

How is it transmitted?

Via respiratory droplets.



Coronavirus can spread through contact with hands. Avoid touching eyes, nose and mouth.



Incubation is between 2 and 14 days.



Preventive measures

Cough or sneeze into a disposable tissue or covering mouth and nose with elbow.



Wash hands frequently with soap and water or alcohol-based solution.



Avoid contact with others if you have a respiratory infection.



Frequent signs and symptoms

Fever



Cough

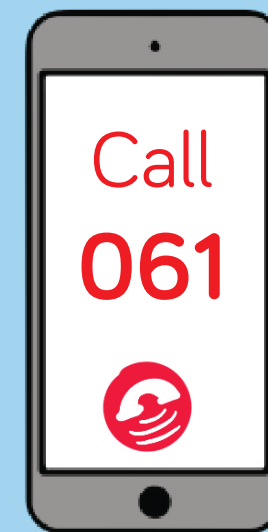
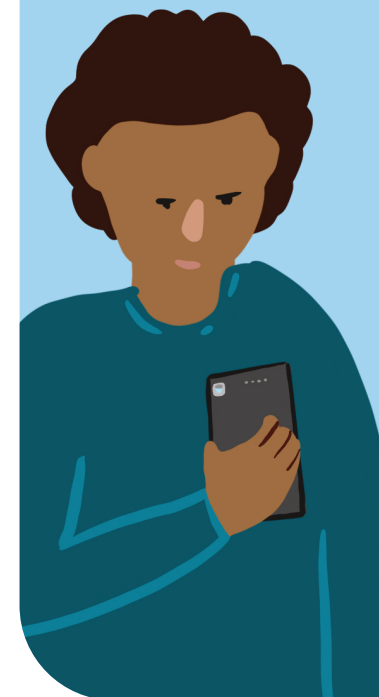


Shortness of breath



If you have any of these symptoms (fever, cough, shortness of breath) and have been in an affected area, or if you have been in contact with someone with the illness.

Stay at home and call 061.



DO NOT GO TO THE DOCTOR'S OFFICE OR THE HOSPITAL EMERGENCY ROOM.

ALWAYS GET INFORMATION FROM OFFICIAL SOURCES

What area is at risk right now?

Where can I learn more?

